

December 22, 2022

*Via: Regular Mail*

**[Company Name or Person Name]**  
**[Attention: Name if to a Company]**  
**[Address]**

**Dear [name], [Dear Sir or Madam,]**

**RE: Wild Rose 2 – Layout Update**

You are receiving this letter as an update for the Wild Rose 2 Wind Power Project (the Project) being proposed by Wild Rose 2 Wind LP, a project entity owned by Capstone Infrastructure Corporation (Capstone). The Project will be comprised of 38 total turbines and will generate and supply up to 192 megawatts (MW) of power to the Alberta grid.

As a follow up to our last newsletter and consultation package sent in September, we would like to provide you with a further Project update. We continue to refine the Project plan and have now completed a full round of geotechnical testing this fall at all of the turbine locations. We have also filed a Project amendment with the Alberta Utilities Commission (AUC), and you should have received a notification directly from the AUC about this. As a result of further work optimizing and designing the site, we have now finalized the Project plan by micro-siting and modifying the location of four (4) of the turbine locations from the previous map that was sent out to the public, and we are further adjusting another three (3) turbine locations by re-siting them completely. You are receiving this notification letter and map because you own lands located within 1500m of the Project layout changes and we would like to notify you of the details of the layout change. For clarity, the details of the changes are as follows (relating to the labels shown on the attached updated Site Map):

**Removed turbine locations:** • Turbine locations A1, A2 and T8

**Micro-sited turbine locations:**

- Turbine A3 has been removed (replaced with T10)
- Turbine A4 has been removed (replaced with T11)
- Turbine A8 has been removed (replaced with T12)
- Turbine A6 has been removed (replaced with T13)

**Updated Turbine locations:** • Added turbine locations T23, T34 and A5

All of these turbine location changes are clearly marked and highlighted on the attached map.

The attached Project map presents the final layout (38 total locations) that is planned for the Project. It is also noted that this final Project layout is compliant with all AUC noise requirements. This layout update is now final and construction planning has been initiated for some time in 2023. Once the exact schedule is known, another notice will be sent out to all nearby stakeholders.

As more information about the Project becomes available, we will continue to send you notices and updates. We will also keep the Project website current with the latest Project updates and reports for your review and consideration. All of the latest Project information can be found at: [www.wildrose2wind.com](http://www.wildrose2wind.com).

Please do not hesitate to contact me directly at the phone or email provided below, or otherwise reach out directly to any of our other consultation representatives if you have any further questions.

Sincerely,

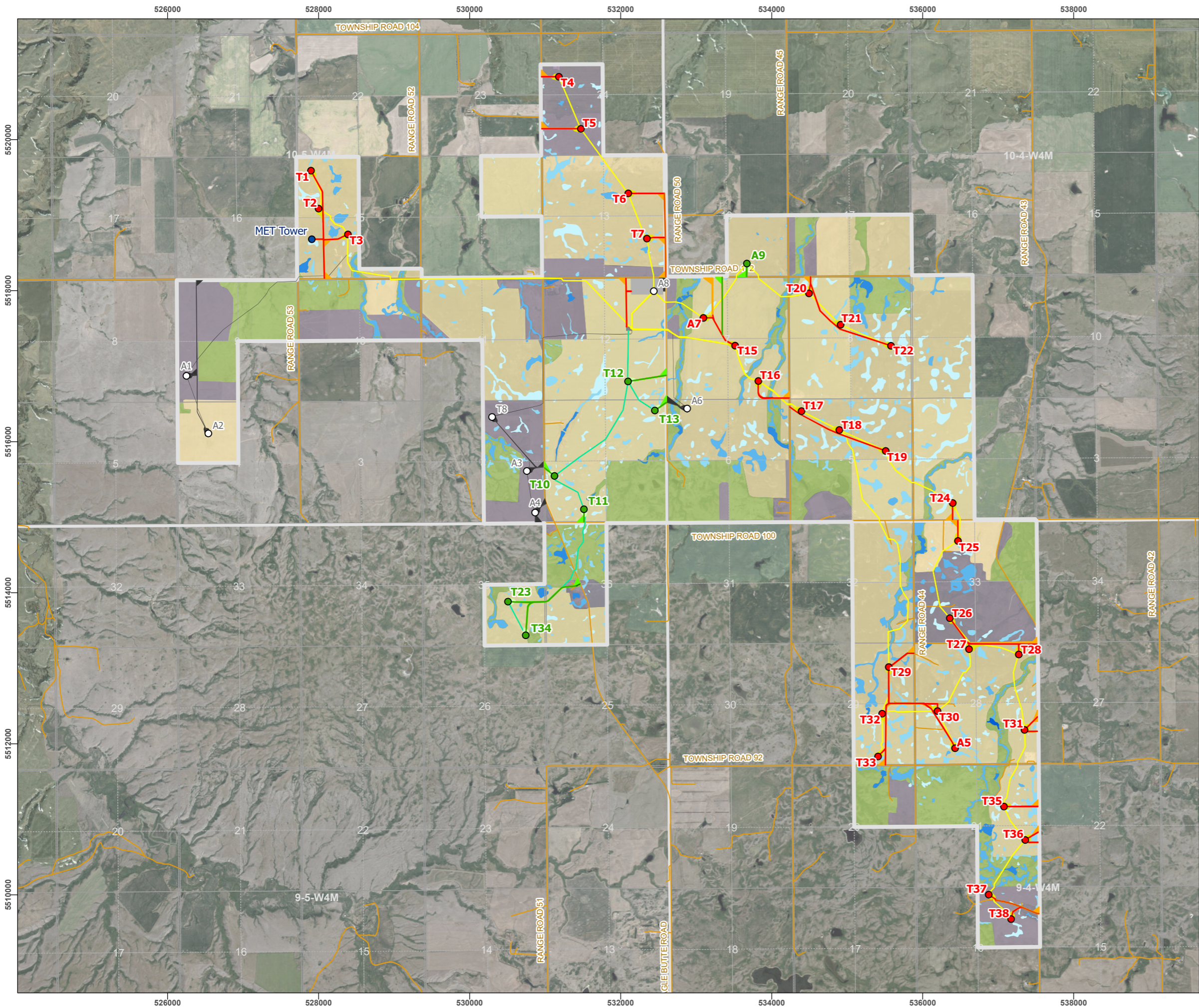
A handwritten signature in black ink, appearing to read 'Frank Hennessy', with a stylized flourish at the end.

**Frank Hennessy**  
Senior Development Manager  
Capstone Infrastructure Corporation  
T: 1-289-201-3638  
E: [projects@capstoneinfra.com](mailto:projects@capstoneinfra.com)

Enclosure: Updated Project Layout Map

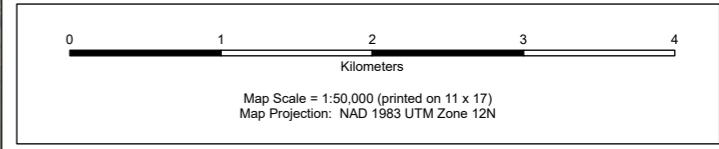
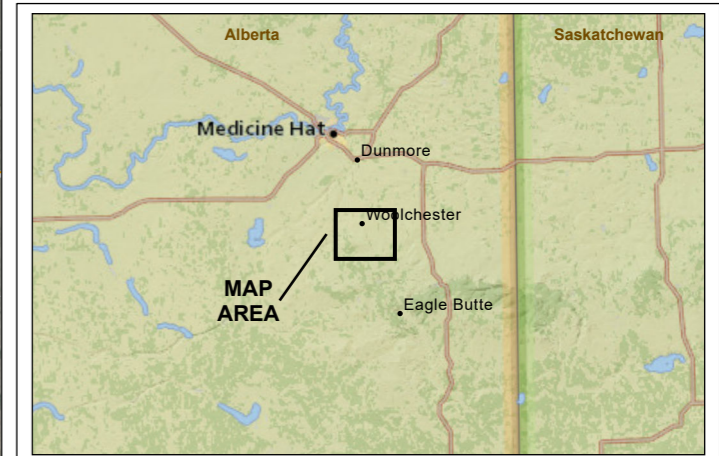
**Figure 1. Updated Wild Rose 2 Wind Power Project**

**Wild Rose 2 Wind LP**



**Legend**

<p><b>Updated Layout Project Area</b></p> <ul style="list-style-type: none"> <li>Updated Layout Project Area</li> </ul> <p><b>Project Infrastructure</b></p> <ul style="list-style-type: none"> <li>Turbine Location</li> <li>MET Tower</li> <li>Removed Turbine Location</li> <li>Access - Existing Disturbance</li> <li>Access - Operational Disturbance</li> <li>Access - Operational Disturbance</li> <li>Met Tower - Operational Disturbance</li> <li>Access - Construction Disturbance</li> <li>Turbine - Construction Disturbance</li> <li>Met Tower - Construction Disturbance</li> <li>Collector Line - Construction Disturbance</li> <li>Laydown Area</li> <li>Substation</li> <li>Removed Project Infrastructure</li> </ul>	<p><b>Local Road</b></p> <ul style="list-style-type: none"> <li>Township</li> <li>Section</li> <li>Quarter Section</li> <li>LSD</li> </ul> <p><b>Updated Project Infrastructure</b></p> <ul style="list-style-type: none"> <li>Updated Turbine Location</li> <li>Access - Existing Disturbance</li> <li>Access - Operational Disturbance</li> <li>Turbine - Operational Disturbance</li> <li>Access - Construction Disturbance</li> <li>Turbine - Construction Disturbance</li> <li>Collector Line - Construction Disturbance</li> </ul>	<p><b>Land Cover</b></p> <ul style="list-style-type: none"> <li>Cultivated</li> <li>Farm Yard</li> <li>Native Grassland</li> <li>Road</li> <li>Tame Pasture</li> <li>Trail or Unimproved Road</li> <li>Wetland - Class I</li> <li>Wetland - Class II</li> <li>Wetland - Class III</li> <li>Wetland - Class IV</li> <li>Wetland - Class V</li> </ul>
--	--	---



**Data Sources**

- Project Data. September 14, 2022. Wild Rose 2 Wind LP.
- 2016 Turbine Locations. August 16, 2016. Technical Memo. Golder Associates Ltd.
- Land Cover data. September 13, 2022. Golder Associates Ltd. and EDI Environmental Dynamics Inc.
- Wetland Data. September 14, 2022. EDI Environmental Dynamics Inc.
- Inset Basemap. National Geographic World Map: National Geographic, Esri, Garmin, HERE, UNEP-WCMC, USGS, NASA, ESA, METI, NRCAN, GEBCO, NOAA, increment P Corp.
- Main Basemap. World Imagery: Cypress County, Earthstar Geographics

**Disclaimer**  
 EDI Environmental Dynamics Inc. has made every effort to verify this map is free of errors. Data has been derived from a variety of digital sources and, as such, EDI does not warrant the accuracy, completeness, or reliability of this map or its data.

Drawn: C. Tennant/O. Leblanc	Checked: J. Muir	Figure 1	Date: 2022-12-22
---------------------------------	---------------------	----------	------------------



Path: L:\PROJECTS\2021\PRJ\10450\_WildRose2\_CONFIDENTIAL\CD\048\_WildRose2\_Updated.aprx